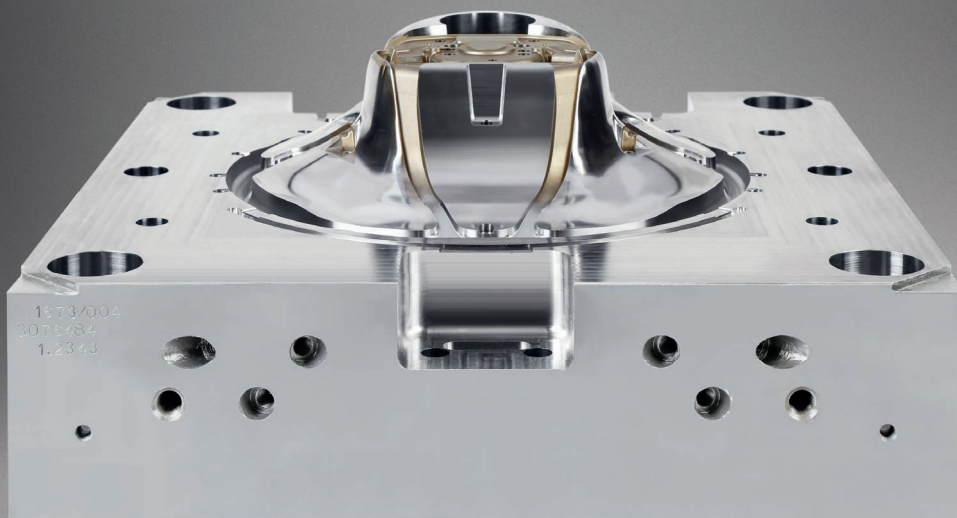


Focus on precision.



— Joyson Tooling Europe

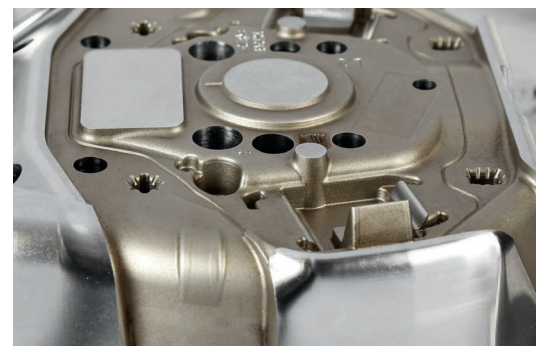
— Tooling and plant construction / Product portfolio

Die casting molds

Joyson Tooling die casting molds combine a high degree of standardization with impressive precision. They're durable, easy to maintain, and can produce parts in large quantities.

Our die casting range includes tools to make structure components and housings from aluminum or magnesium alloys. These can incorporate one or more cavities to suit your requirements. Additionally, we have decades of experience with tools for hybrid parts with steel inserts.

Our state-of-the-art machines can make tools of up to 700 x 700 x 1000 mm, with a total weight of up to 3.5 tons.



Your benefits at a glance:

- High process quality
- Long lifetime
- Low maintenance
- Low tooling cost per piece

For detailed information please visit:
www.tooling.eu.joysonsafety.com

